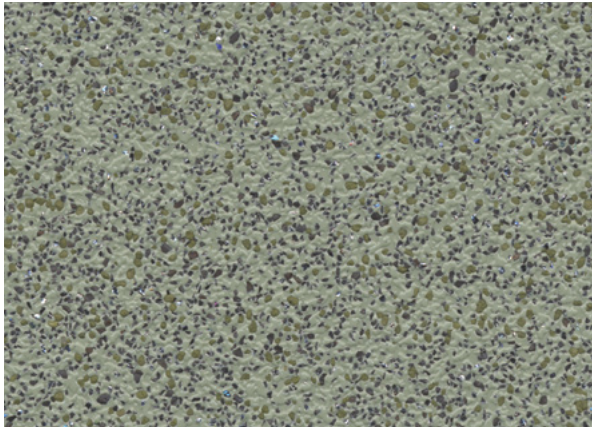




# Polysafe™ Apex

**SAFETY FLOORING**



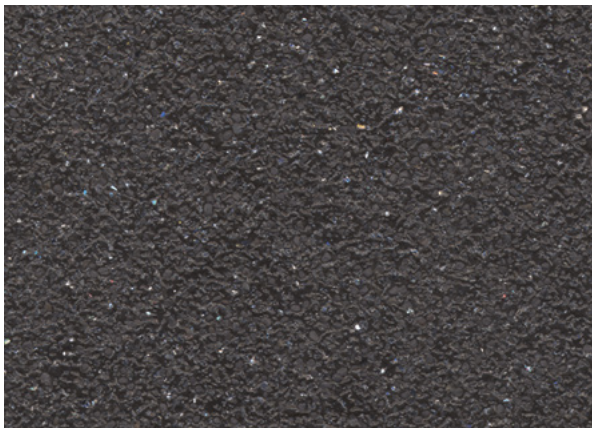
**Green Quartz 4201**  
NCS S 5005-G50Y

w/r 4350  
LRV 24



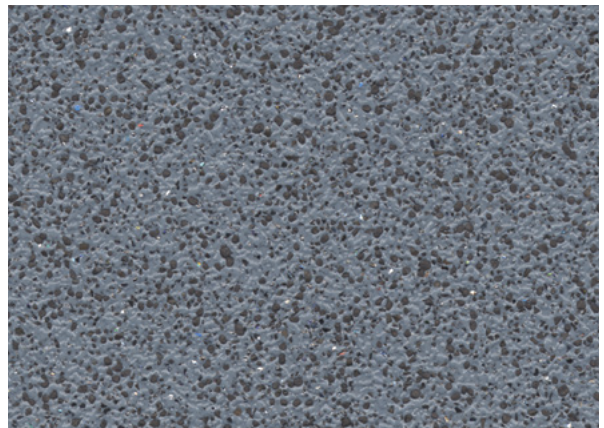
**Chromite 4202**  
NCS S 6500-N

w/r 4610  
LRV 15



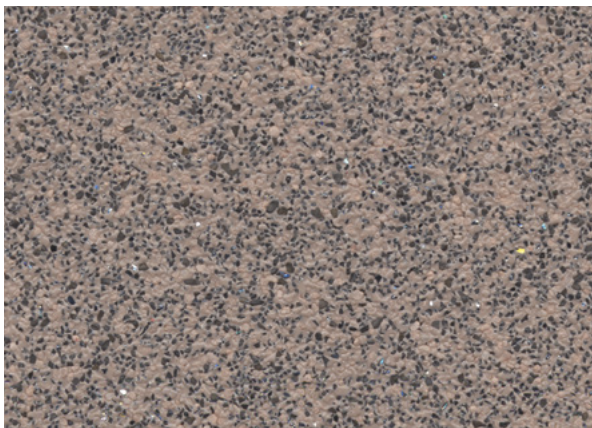
**Biotite 4203**  
NCS S 8000-N

w/r 8640  
LRV 6



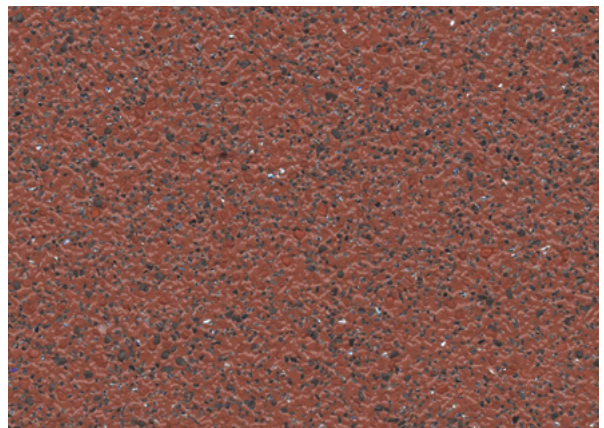
**Breccia 4204**  
NCS S 5010-R90B

w/r 4670  
LRV 18



**Siltstone 4205**  
NCS S 5005-Y80R

w/r 4600  
LRV 23



**Red Ochre 4206**  
NCS S 5030-Y80R

w/r 4206  
LRV 13

**Heavy-duty safety flooring with enhanced slip resistance for commercial kitchens and food processing areas**

w/r = weld rod    NCS = Natural Colour System    LRV = Light Reflectance Value

